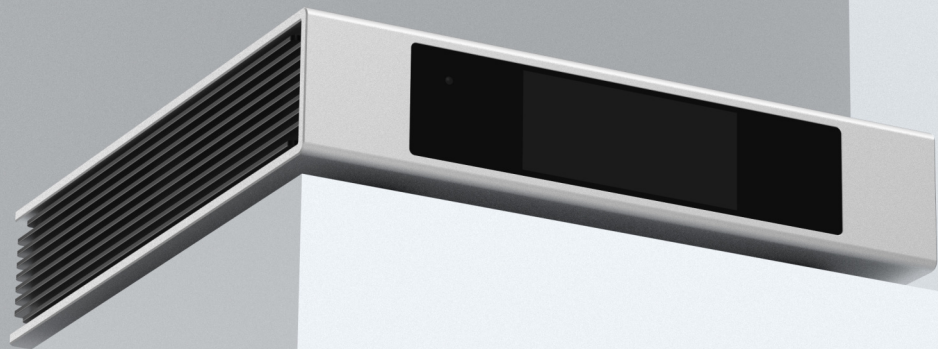




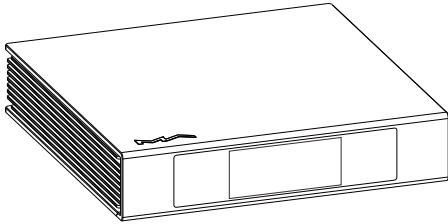
矩声®



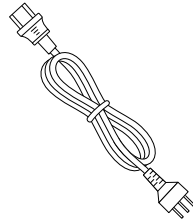
element  |  
Music Streamer

User Manual

Packing list . . . . .	01
<b>Parts and names . . . . .</b>	<b>02</b>
Front . . . . .	02
LCD Screen . . . . .	02
Rear . . . . .	03
<b>Operations before using . . . . .</b>	<b>04</b>
Connect to network . . . . .	04
MA Remote App . . . . .	04
Driver for USB Audio . . . . .	05
<b>Appendix . . . . .</b>	<b>07</b>
Technical specifications . . . . .	07
Power specifications . . . . .	08
Other specifications . . . . .	08
About Roon Ready . . . . .	08
About Spotify . . . . .	08



Product

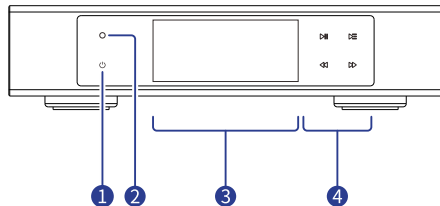


Power cable



Quick start guide, warranty card

## Front

**1 Power on/Standby**

After connecting to power supply, tap on this button to power on the unit, tap on it again to let the unit standby. It takes about 30 seconds for the first start up after connecting to power supply each time.

**2 IR remote receiver**

This product supports RM4 remote control, the input channel selection and playback control can be done through the RM4.

\*The RM4 is an optional accessory, it's not provided with the product. The RM4 can be purchased separately if needed.

**3 LCD screen****4 Playback touch control area**

## LCD screen

## Display information

**1 Media and audio information**

Including album art, track title, artist, duration, audio format and sampling rate of the track .

**2 Input channel**

The name of selected input channel.

**3 Status**

Including status of clock, network connection, USB storage and NAS.

**4 Output channel**

The selected output channel.

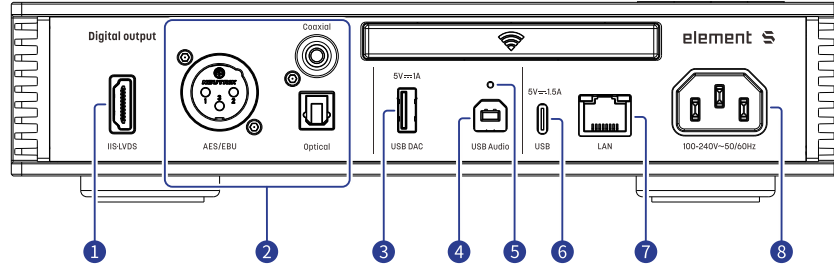
## Operation of touch screen



Swipe right to open the shortcut page.

Swipe left to open menu.

## Rear

**1 IIS-LVDS Output**

The IIS-LVDS port outputs a maximum 32Bit/768kHz sampling rate PCM signal, DSD64/128/256/512 signal on Native DSD standard, and DSD64/128/256 signal on DoP standard.

Connect to the devices with IIS-LVDS input port from Matrix Audio or other compatible devices through HDMI cables. The unit is compatible with 4 kinds of IIS-LVDS pin definitions, which can be viewed and configured in the MA Remote App. The ground wire of the IIS-LVDS port is electrically isolated with the ground wire of power input.

**2 Optical ,coaxial & AES/EBU outputs**

The optical, coaxial and AES/EBU ports output up to 24Bit/192kHz PCM signal conforming to S/PDIF standard and 1Bit/DSD64 signal under DoP standard.

\* When the sampling rate of the played audio file exceeds the maximum capability of the output port, the output will be automatically turned off.

**3 USB DAC output**

An external USB DAC can be connected to the product via this port. The audio specs depend on the external DAC.

This port provides up to 5V/1A low noise power to the external USB DACs.

\* When the output channel is set to USB DAC, outputs including optical, coaxial and AES/EBU will be turned off. The 2 output methods can't work at the same time.

**4 USB Audio**

The product works as a USB audio interface when connecting to a computer via a USB Type B cable.

\* In this case, only the output ports optical, coaxial and AES/EBU take effect. The USB DAC output will not work.

**5 Reset button**

Only use this button when the unit works incorrectly, the unit can be reset to factory state. Please operate under the instructions by service team from Matrix Audio.

**6 USB Type C**

USB storage devices and CD drives can be connected through this port. The power supply requirement of the device should not be higher than 5V/1.5A.

**7 Ethernet**

Connect to LAN port of the network router, the connection supports up to Gigabit Ethernet transmission.


**8 AC Input**

This product adapts to AC100-240V power voltage range automatically . Please make sure to use the product in the correct power voltage range.


\* Please use the power cable which includes an earth wire. Please ensure you have a reliable earth wire connection. Otherwise, the casing of the unit may have a slightly charged touch. If you need the unit to be turned off completely, please unplug the power cable.

## Connect to Network

### LAN

Connect the product to the LAN port of the network router through an Ethernet cable. It is recommended to set up the router as a DHCP server, the unit will be assigned an IP address automatically. Select "LAN" in option Network in Settings menu. After joining the network, there will be a  shown in the status bar.

### Wi-Fi

Enter Settings menu - Network - Wi-Fi, after network scanning complete, choose the SSID of your network and enter the passwords, there will be a  shown in the status bar after connected. The device supports 2.4GHz/5GHz wireless network.

When the connection has no Internet access, there will be a  in the status bar.

## MA Remote App

Install MA Remote App for your iPad, iPhone or Android phone.



Open the app, it will automatically search for the device and enter the home page after the device is added.

If you need to add the device manually, you can follow the prompts in the app wizard and scan the host QR code to add it manually.

\* Please make sure the device and your phone or iPad in the same network before connection.



To control and configure the element device through MA Remote App, or playback streaming music from the element devices, please refer to [matrix-digi.com/tutorials](http://matrix-digi.com/tutorials) for instructions.

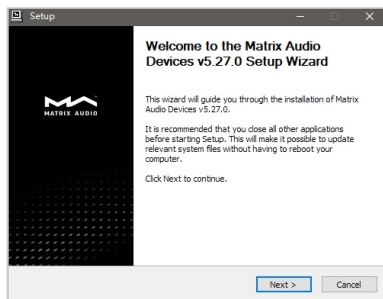


[Tutorial Video](#)

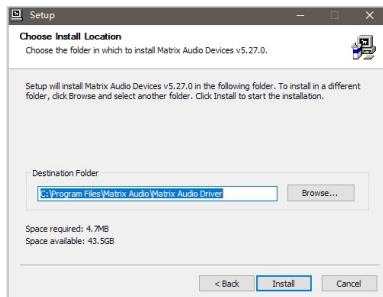
## Driver for USB Audio

When connecting the device to a Windows 7/8/10/11 computer via USB connection as an external audio device, please install drivers as following instructions:

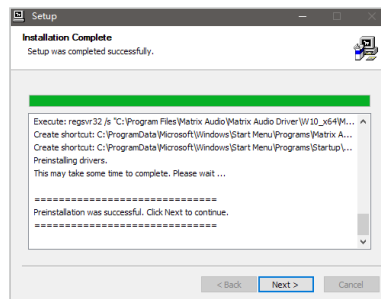
1. Double-click the driver installation package and click "Next".



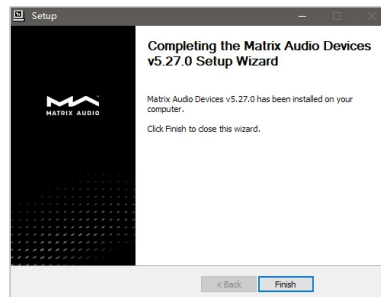
2. Select installation path and click "Install".



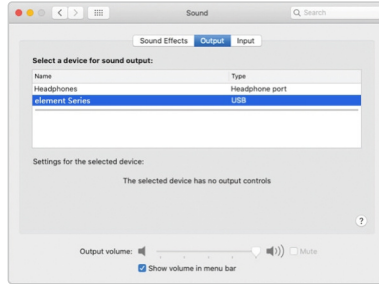
3. Click "Next" after the installation is complete.



4. Click "Finish" to close the Setup Wizard.



It's no need to install drivers for macOS, just select "element Series" as the audio output device in Sound Preferences.



The element devices can be connected to an iPhone or iPad via a Lightning to USB Camera Adapter.

The element devices can be connected to Android devices via an OTG adapter, but not every Android devices are compatible with device via OTG connection.



## Technical specifications

### Hardware Platform

CPU : NXP i.MX 6Quad Cortex-A9

### Digital Input

USB Audio :

PCM 16-24Bit/44.1kHz,48kHz,88.2kHz,96kHz,176.4kHz,  
192kHz,352.8kHz,384kHz,705.6kHz,768kHz  
DSD 2.8MHz, 5.6MHz, 11.2MHz (DoP)  
DSD 2.8MHz, 5.6MHz, 11.2MHz, 22.4MHz (Native)

### Digital Output

COAXIAL、OPTICAL&AES/EBU:

PCM 16-24Bit /44.1kHz, 48kHz, 88.2kHz, 96kHz,  
176.4kHz, 192kHz  
DSD 2.8MHz (DoP)

IIS-LVDS :

PCM 16-32Bit/44.1kHz, 48kHz, 88.2kHz, 96kHz, 176.4kHz,  
192kHz, 352.8kHz, 384kHz, 705.6kHz, 768kHz  
DSD 2.8MHz, 5.6MHz, 11.2MHz (DoP)  
DSD 2.8MHz, 5.6MHz, 11.2MHz, 22.4MHz (Native)

USB DAC :

The audio specs depend on the external DAC.  
The port provides up to 5V/1A low noise power to external USB DACs.

### Network

LAN : 10/100/1000 Mbps  
WLAN : 2.4GHz/5GHz

### USB Type C

The USB Type C port provides a maximum power of 5V/1.5A.

The USB port works with devices which conform to the USB mass storage standard and supports FAT, FAT32, exFAT and NTFS file formats, but is not guaranteed to be compatible with all storage devices.

### MA Player

Controller app : MA Remote App

Local Playback:

Format Supported MP3, WMA, WAV, AIF, AIFC, AIFF, AAC, FLAC, OGG,  
APE,ALAC, M4A, DSF, DFF,CUE  
PCM 16-24Bit/44.1kHz, 48kHz, 88.2kHz, 96kHz, 176.4kHz,  
192kHz,352.8kHz, 384kHz, 705.6kHz, 768kHz  
DSD 2.8MHz, 5.6MHz, 11.2MHz, 22.4MHz

Room Ready:

PCM 16-24Bit /44.1kHz, 48kHz, 88.2kHz, 96kHz, 176.4kHz,  
192kHz, 352.8kHz, 384kHz, 705.6kHz, 768kHz  
DSD 2.8MHz, 5.6MHz, 11.2MHz, 22.4MHz

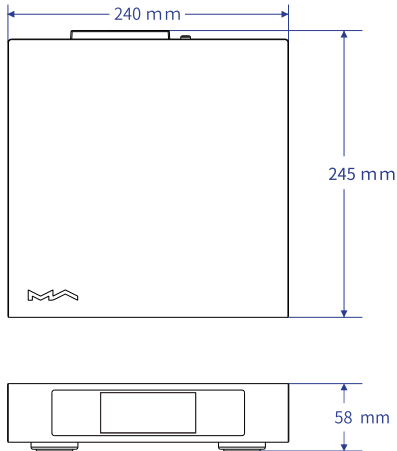
AirPlay 2, DLNA/UPnP, TIDAL Connect, Spotify Connect, vTuner, Radio Paradise, the audio specs depend on the service provider.

## Power specifications

Power Voltage : AC 100V-240V 50/60Hz  
Standby Power Consumption : < 5W  
Maximum Power Consumption : < 30W

## Other specifications

Weight : 2.4 kg (5.29 pounds)  
Size : Width 240 mm (9.45 inches)  
Depth 245 mm (9.65 inches)  
Height 58 mm (2.28 inches)



## About Roon Ready

Being Roon Ready means that Matrix Audio devices transparently discover and connect to Roon without any configuration, and bit-perfect audio is delivered from Roon to your devices.

## About Spotify

Use your phone, tablet or computer as a remote control for Spotify. Go to [spotify.com/connect](https://spotify.com/connect) to learn how.

The Spotify Software is subject to third party licenses found here:

<https://www.spotify.com/connect/third-party-licenses>.

- This product is for indoor use only.
- For full ventilation, it is recommended to reserve a space of larger than 5 cm around the device.
- Do not cover the air vents with stuffs such as papers, tablecloths, and curtains to obstruct ventilation.
- Do not place stuff with flame, such as lighted candles, on the device.
- If the device is used in tropical areas, please be careful to prevent insects from entering the unit through the air vents.
- The device must not be subject to water droplets or splashes. Please do not place stuffs filled with liquids such as vases and cups on or near the device.
- Do not put stuffs around the device power plug and the AC power socket, in order to disconnect the power supply easily when needed.

# HIGH PERFORMANCE AUDIO

[www.matrix-digi.com](http://www.matrix-digi.com)

Matrix Electronic Technology Co., LTD  
+86-29-86211122  
Room 206 Block B, #58 Mingguang Rd,  
Xi'an, China

